

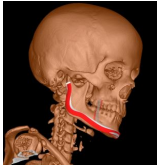
## Geometric Morphometrics and Shape analysis

The methods of modern morphometrics open a vast field of opportunities for physical anthropologists, as they allow to grasp the shape of a complex configuration of points (representing a biological feature) mathematically. Thus makes it possible to extract statistical information not only addressing a set of points but a shape as a whole. At the moment, we do research in hindsight to medical applications, anthropological questions such as sexual dimorphism, changes of osseous structures due to aging and forensic purposes like reconstructing the shape of soft tissue from information obtained by the underlying bone configuration. In the following we want to shortly present two examples of our current research.

Contact: [Stefan Schlager](#)

### Medical Purposes

Construction of titanium mandible plates for reconstruction of the bone structure after tumor section.



### Dynamic Nose Template

