

Organization Chart Tumorzentrum Freiburg - CCCF

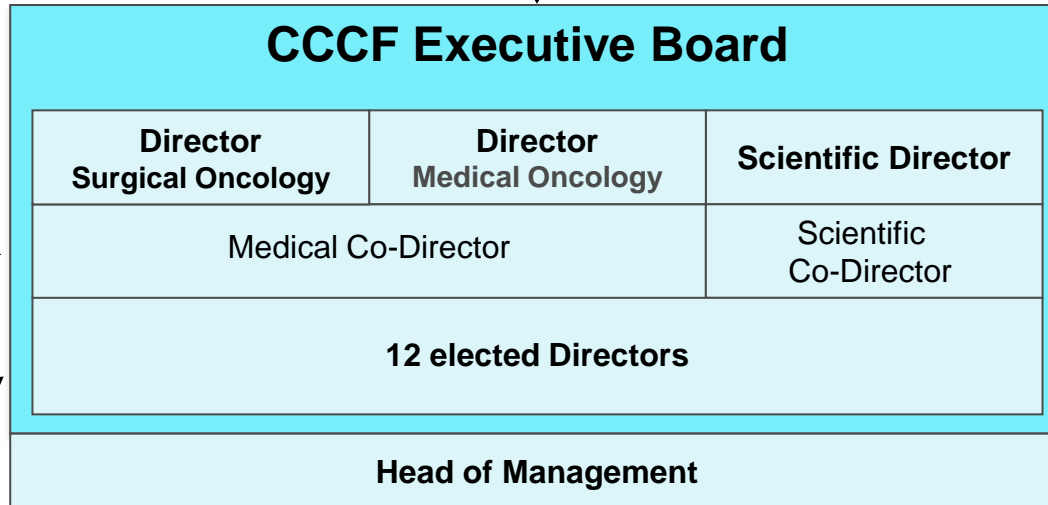


Hospital Executive Board of the Faculty

Scientific Advisory Board (ESAB)

Patient Advisory Board

Board of Cooperating Partners



CCCF-Board:
Directors of Member Departments, Chief Medical Officer, Dean of the Faculty of Medicine. Guests: Chief Financial Officer, Director of Nursing



| Arbeitsfelder | | |
|---|--|---|
| 1. Interdisciplinary Care | <ul style="list-style-type: none"> - Interdisciplinary Tumor Boards - Ambulances and Central Appointment Scheduling Service - Interdisciplinary Supportiv Therapies | <ul style="list-style-type: none"> - Psychosocial Cancer Advice/ Tigerherz - Palliative Care Medicine |
| 2. Translational and Clinical Cancer Research | <ul style="list-style-type: none"> - Interdisciplinary Cancer Research Projects - Clinical Trials - CCCF-Biobanks | <ul style="list-style-type: none"> - German Cancer Consortium - Centrum for Translational Research |
| 3. Cancer Documentations, Quality Management and General Tasks | <ul style="list-style-type: none"> - Cancer Documentation/ CCR - Outreach and Networking - Communication | <ul style="list-style-type: none"> - Quality Management - Staff Organization and Finances |



