

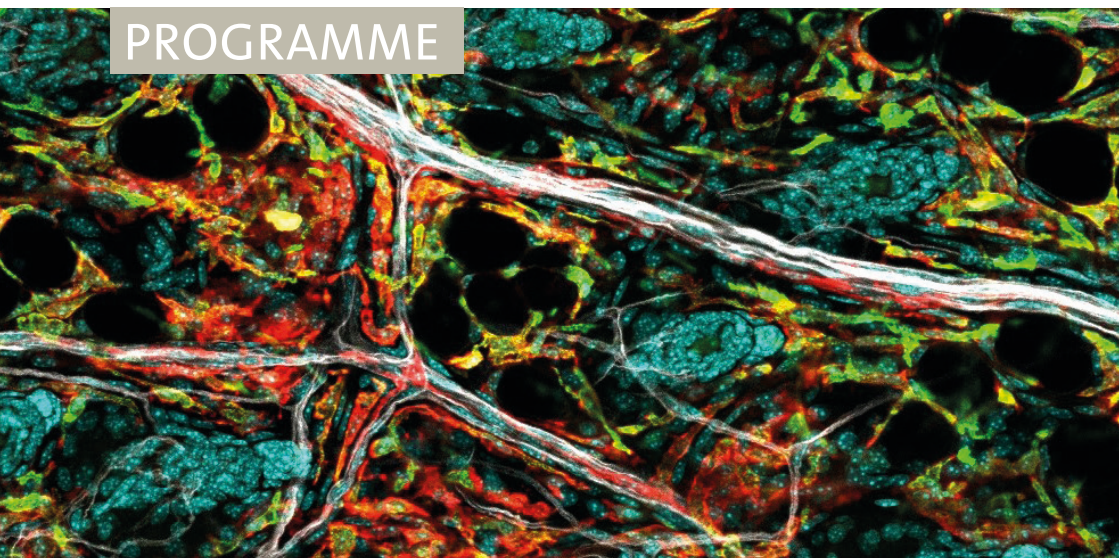


# TRR359 PILOT INTERNATIONAL SYMPOSIUM 2025

Symposium on Perinatal and Early Life Immunity

FREIBURG | APRIL 09 - 12

## PROGRAMME



Funded by



Deutsche  
Forschungsgemeinschaft  
German Research Foundation

This Symposium has been organized by the transregional Collaborative Research Center **TRR 359 PILOT (Perinatal Development of Immune Cell Topology)**, which is financed by the DFG (German Research Foundation). For more information about PILOT, please visit our website [www.perinatal-immunity.de](http://www.perinatal-immunity.de).

**Organizing Committee**

Philipp Henneke	Katrin Kierdorf	Roland Immler
Markus Sperandio	Julia Kolter	Natalia Torow

**Coordination**

Claus-Werner Franzke	Anneke Haddad	Verena Kochan
----------------------	---------------	---------------

**Event Management**

Elke Bühner	Melanie Springman
-------------	-------------------

Dear Participants,

It is our pleasure to welcome you to Freiburg for the **International Symposium on Perinatal and Early Life Immunity**.

We are delighted to be welcoming leading scientists from around the world to explore the latest discoveries in early immune development. The focus will be on how the fetal immune system prepares for the transition from intrauterine to postnatal life, how it adapts to this shift, and the enduring effects on cellular immunity and associated organ functions.

Key discussion topics include:

- How does pre-programmed development, supported by endogenous cues, steer innate immune cell differentiation, adaptation to tissue structures, and immunity to infection?
- What impact does the birth transition have on tissue immune architecture and topology?
- How do postnatal cues, such as the microbiota and metabolic changes, guide innate immune cell differentiation and function in immunological niches?

We are particularly eager to foster discussions on translational aspects of immune development to highlight how a deeper understanding of underlying mechanisms could lead to innovations in diagnosis, prediction and therapy.

The Symposium offers a mix of expert lectures, highlight talks and an interactive poster night, featuring both internationally renowned scientists and early-career researchers. We aim to create a space for lively, interdisciplinary discussions that may spark new hypotheses in this dynamic research field. Additionally, we hope to facilitate meaningful connections among researchers to promote the development of new scientific networks.

We sincerely hope that you will find the meeting both scientifically and personally inspiring.

Yours,

Philipp Henneke & Markus Sperandio  
For the Organizing Committee

## Programme

### WEDNESDAY 9<sup>TH</sup> APRIL 2025

12.00 - 13.00

Arrival

13.00 - 13.15

Welcome and introduction

*Philipp Henneke & Markus Sperandio*

**13.15 - 15.15**

#### **Session 1: Immunity at the materno-fetal interface**

*Chairs: Philipp Henneke & Markus Sperandio*

Modulation of early life immunity by vertical transfer of maternal immune markers during pregnancy

*Petra Arck*

In utero sterile inflammation: How it shapes the offspring's immune system and prevention strategies

*Nardhy Gomez-Lopez*

Preimplantation factor (PIF) is an endogenous inhibitor of potassium channel KV1.3 regulating neutrophil function in vivo during pregnancy

*Roland Immler*

Antibiotic use during pregnancy influences placental morphogenesis and offspring immune system development

*Melanie Conrad*

Maternal gut microbiota induces  $\gamma\delta$ T cells at the maternal-fetal interface to prevent pathogen-associated intrapartum complications

*Koichiro Suzuki*

15.15 - 15.40

Coffee break

**15.40 - 17.50**

#### **Session 2: Early innate immune cell development**

*Chairs: Barbara Schraml & Michele Proietti*

Title TBC

*Elisa Gomez Perdiguero*

The role of embryonic macrophages in the formation of a bone marrow niche key for the establishment of a hematopoietic stem cell pool

*Claudia Waskow*

Host-microbiome interaction in health and disease

*Eran Elinav*

Neonatal monocytes and macrophages display a diverse metabolic phenotype

*Renske de Jong*

Holistic genetic barcoding reveals a lineage tree of tissue macrophage development

*Larissa Frank*

## Programme

17.50 - 18.15

Break

18.15 - 21.15

**Poster evening** with finger food

## THURSDAY 10<sup>TH</sup> APRIL 2025

8.45 - 10.45

### **Session 3: Development of macrophages and DC**

*Chairs: Anne Lösslein & David Hackam*

How resident macrophages shape and maintain the enteric nervous system

*Guy Boeckxstaens*

Monocytes and macrophages – revisited

*Steffen Jung*

ROR $\gamma$ t-expressing dendritic cells are functionally versatile and evolutionarily conserved antigen presenting cells

*Barbara Schraml*

How early postnatal microglia shape CNS homeostasis

*Marco Prinz*

Inhibition of TNFR2 signaling improves neonatal immune responses to vaccination and infection by limiting regulatory maturation of lung XCR1+ dendritic cells

*Aaron Silva Sanchez*

10.45 - 11.00

Coffee Break

11.10 - 13.10

### **Session 4: Maternal cues in early immune development**

*Chairs: Zsolt Ruzsics & Julia Kolter*

Decoding placental antibody transfer and its impact on early life vaccine immunity

*Galit Alter*

Microbial and host interactions in pregnancy and early life: balancing beneficial and pathogenic influences

*Lindsay Hall*

Differential developmental paths and functions of cardiovascular macrophages

*Christian Schulz*

Maternal microbial metabolites and extracellular vesicles in the fetal development of the intestinal immune system

*Mikael Niku*

In utero infection modulates neonatal tissue-resident acetyl choline-producing B cells critical for regulating macrophage responses to influenza infection

*Nicole Baumgarth*

13.10 - 14.25

Lunch, Podium discussion with Editors & Posters

*Chairs: Sarah Kim-Hellmuth & Ramin Shakiba*

## Programme

### THURSDAY 10<sup>TH</sup> APRIL 2025

14.25 - 16.25

#### Session 5: Prenatal immune development

*Chairs: Sebastian Preissl & Thomas Boehm*

The developing human immune system

*Muzlifah Haniffa*

Interplay between the human fetal immune system and microbes

*Florent Ginhoux*

Fibroblast-immune interactions guide skin development and healing response

*Yuval Rinkevich*

Early microglia progenitors colonize the embryonic CNS via integrin-mediated migration from the pial surface

*Katrin Kierdorf*

Placental macrophages and how they fight *Listeria monocytogenes* infection

*Naomi McGovern*

16.25-17.15

#### Coffee break and Posters

17.15 - 19.15

#### Session 6: Early life intestinal immunity

*Chairs: Natalia Torow & Kathy McCoy*

Early life risk factors in the pathogenesis of necrotizing enterocolitis, and the discovery of novel therapies (**CIBSS sponsored talk**)

*David Hackam*

Regulation of ILC differentiation and maintenance by the intestinal epithelium

*Christina Stehle*

Unexpected homes - identifying the role of intestinal naive T cell homing in early life

*Elise Saager*

Spatio-temporal regulation of intestinal development

*Chloe H. Lee*

A systemic wave of neonatal eosinophils promotes tissue homeostasis and commensalism

*Ignacio Gonzalez Perez*

20.30  
onwards

#### Invited Speakers' Dinner

(by invitation only)

## Programme

**FRIDAY 11<sup>TH</sup> APRIL 2025**

**8.45 - 10.45**

### **Session 7: Development of adaptive immunity**

*Chairs: Claudia Nussbaum & Sagar*

Evolutionary trajectory of vertebrate immunity

*Thomas Boehm*

Unique features of adaptive immune cells in human neonates

*Deena Gibbons*

Long-term induction of hepatic T cell homeostasis during an early neonatal time window

*Natalia Torow*

A single-cell multiomics map of prenatal and adult human B-lymphopoiesis

*Marta Rizzi*

LIN28B constrains IgL receptor editing to accelerate B cell maturation in early life

*Elena Boldrin*

**10.45 - 11.10**

### **Coffee break**

**11.10 - 13.10**

### **Session 8: Development of immunity at interfaces**

*Chairs: Sebastian Baasch & Dunja Bruder*

The development and function of embryonic macrophages at the maternal-fetal interface

*Melanie Greter*

Title TBC

*Christoph Thaiss*

Interleukin 7 signaling as a critical player in lung vascular disease connecting immune response and endothelial cell pathology

*Anne Hilgendorff*

Early life RSV infection as a preventable risk factor for asthma

*Elisabeth De Leeuw*

How early-life perturbations and microbiota affect the development of tissue-resident Tregs

*Jochen Hühn*

**13.10 - 14.10**

### **Lunch & Posters**

## Programme

**14.10 - 16.10**

### **Session 9: Development and adaptation of myeloid cells**

*Chairs: Claudia Waskow & Melanie Börries*

A potential reason for bloodstream infections in newborns  
*Paul Kubes*

Understanding adaptation processes in monocytes after birth to promote precision medicine  
*Dorothee Viemann*

Tracing the development of circadian rhythms in the immune system  
*Christoph Scheiermann*

Contribution of pancreatic macrophages to neonatal islet maturation and long-term glucose homeostasis  
*Maria Ovezik*

TGFb drives macrophage development in the skin  
*Julia Kolter*

**16.10 - 16.55**

### **Coffee break and Posters**

**16.55 - 18.55**

### **Session 10: Perinatal immune adaptation**

*Chairs: Gabriel Nunez & Roland Immler*

Dynamics and mechanisms of innate clonality  
*Chiara Romagnani*

Host-microbiome interaction in the respiratory tract in early life  
*Debby Bogaert*

Development of barrier immunity against naturally colonizing streptococci  
*Philipp Henneke*

How maternal neutrophils facilitate *Listeria* infection of the placenta and fetus  
*Markus Sperandio*

Every hour counts: mapping neonatal blood plasma proteome changes during the first 2 days of life at hourly resolution  
*Hanno Steen*

**20.00 onwards**

### **Social Evening & Prize Ceremony (Wodan Halle)**



## Programme

### Directions to the Social Event

The Social Event on Friday 11th April will take place in the Wodan Halle, Leo-Wohleb-Str. 4, 79098 Freiburg, which is less than 1km away from the Historisches Kaufhaus and easily reachable on foot.

Directions are available here:

<https://maps.app.goo.gl/EbmTKdz2Zr3DXe5Ng>

...or you can use the QR code on the right.



## SATURDAY 12<sup>TH</sup> APRIL 2025

8.45 - 10.45

### Session 11: Development of microbiome and metabolism

*Chairs: Mathias Hornef & Carsten Marr*

The role of probiotics in the microbial cloud of preterm babies  
*Christoph Härtel*

Microbial sensing via a leaky gut imprints developing immune cells in human newborns  
*Petter Brodin*

The antimicrobial host response to infection in the neonatal small intestine  
*Mathias Hornef*

Microbiota during early life windows orchestrates intestinal maturation and barrier formation in the neonate  
*Stephanie Ganai-Vonarburg*

Early-life bifidobacterial metabolite reduces IgE production and allergic sensitization  
*Rasmus Kaae Dehli*

10.45 - 11.10

### Coffee break

11.10 - 13.10

### Session 12: Microbiome and barrier immunity

*Chairs: Stephan Rosshart & Katrin Kierdorf*

Microbiota-host interactions in Health and Intestinal Inflammatory Disease  
*Gabriel Nunez*

Title TBC  
*Kathy McCoy*

Different impact of host microbiota on the CNS immune system across mouse strains  
*Daniel Erny*

The influence of T cell-microbial interactions during weaning on long-term diseases development  
*Ziad Al Nabhani*

Gut microbiome and microbe-host interactions in early life  
*Tom Clavel*

13.10 - 13.25

Closing remarks  
*Markus Sperandio & Philipp Henneke*

From 13.30

### Departure

## Posters

Posters are located in four different areas of the Historisches Kaufhaus (Foyer, Rokokosaal, Kaminsaal and Innenhof). Please check the information boards to find out where any particular poster is located.

Participants whose abstracts were selected for presentation as a short talk have additionally been invited to present their work as a poster. These posters are listed separately after the other posters and have been grouped together in the Innenhof (Courtyard) on the ground floor.

All participants are encouraged to vote for the Audience Poster Prize using the QR code at the end of this booklet.

No.	Title	First author
101	Gut-liver axis calibrates intestinal stem cell fitness	Chuan Wu
108	Impact of microbiota from preterm infants on the immune system and infection susceptibility	Justine Smout
110	Very preterm neonates require four hexavalent vaccinations during their first year to acquire sufficient immune protection	Michael Zemlin
111	Impact of neonatal RSV infection on innate and adaptive memory and susceptibility to allergic asthma in later life	Ziheng Feng
113	Prevention of transmissions by Effective Colonisation Tracking in Neonates (PROTECT-Neo)	Timmy Nguyen
114	Oxidative phosphorylation is a key feature of neonatal monocyte immunometabolism promoting myeloid differentiation after birth	Dorothee Viemann
115	Interaction between GBS and bacterial commensals from the infant gut microbiota	Candice Raynaud
116	Assessing macrophage plasticity and heterogeneity and their implications for immune response and energy homeostasis under stress	Lena Neuhaus
118	Maternal mental health during the COVID-19 pandemic and childhood health outcomes: The EPPOCH longitudinal pregnancy cohort	Swarali Datye
119	The COVID-19 lockdown is associated with impaired systemic	Jonas Geldner
121	The asthma protective effect of prenatal IgG treatment is associated with long term increase in lung alveolar macrophages	Fariz Kahhaleh
122	Mechanisms and consequences of microglia elimination during postnatal development	Lina Kieger
123	TGF- $\beta$ orchestrates the crosstalk of macrophages and sensory nerves in the skin	Clarissa Döring

## Posters

125	CD8αβ-expressing γδ T cells are innate interferon-γ producers that develop perinatally and expand in IL-7R/STAT5B-driven γδ T cell neoplasms	Gina Fiala
126	Mycobacterial infection uncovers plasticity of Kupffer cells	Jana Neuber
129	Role of postnatal maturation and cellular innate immunity in intestinal colonization with group B streptococcus	Marleen Eckert
130	Early life hepatic innate immune cell priming prior to gut closure	Julian Brück
131	Exploring how exposure to different environments in utero contribute to the concept of transgenerational trained immunity	Achala Indika Kamaladasa
132	Role of placenta-derived peptide PIF in perinatal immune cell regulation	Aleksandra Kurova
134	Gut microbiome-derived small extracellular vesicles exhibit innate immune memory in murine neonatal microglial cells	Trim Laigi
135	The influence of early life infection with Giardia lamblia on the intestinal mucosal immune system	Jonas Pes
136	Treg dynamics in hematopoietic niches in early life	Yunus Centiner
138	Redefining the ontogeny of hyalocytes as yolk sac-derived tissue-resident macrophages of the vitreous body	Peter Wieghofer
139	Effects of maternal hyperlipidemia on embryo derived macrophages	Huan Liu
140	Microbial and microenvironmental cues drive postnatal macrophage specification in the dermis	Nisreen Ghanem
142	Prenatal adversities train sex-specifically the lung innate immunity of the offspring against Influenza-A infection	Ioannis Belios
143	Long-term induction of hepatic T cell homeostasis during an early neonatal time window	Eva-Lena Stange
144	Immune dynamics of Type I and III IFN stimulation in nasal epithelium of preterm infants	Anke Martins
145	Novel layers of memory: impact of previous pathogen encounters in early life on epigenome and functional properties of structural and enteric neuronal cells	Wan Ying Cao
146	Empowering PILOT research through high-dimensional data analysis and workflow development	Michael Rauer
147	Profiling maternal immune activation-induced alterations and training effects in offspring's immune cell compartments	Walaa Jradi
148	Role of ILCs in the Salmonella infection-induced epigenetic and transcriptional changes of the neonatal intestinal epithelium	Anna-Lena Ullrich
151	Perinatal factors modulating the epidermal Langerhans cell niche	Alexander Oschwald
152	S100A8/A9 orchestrates pulmonary adaptation processes after birth	Julia Heckmann

## Posters

156	Maternal probiotic supplementation enhances neonatal immunity via IgG transfer, FcγR-dependent innate activation, and cross-presentation by cDC1s	Jeanne Pauweis
157	Prenatal stress alters fetal microglial dynamics and brain immune environment in mice	Ragnar Rabe
159	Absence of myeloid cells in the infant splenic marginal zone correlates with an impaired humoral immunity	Artur Kibler
160	Automated segmentation, detection, and morphological characterization of tissue macrophages	Amirhossein Kar-doost
161	Prenatal stress-exposure results in sex-specific consequences of T cell responses upon an influenza infection in adolescent offspring	Christopher Urb-schat
163	Neonatal immunological imprinting by microbial metabolites	Charles Grosjean
165	Deciphering Gestational Age-Specific Immune Signatures in Neonates using CITE-seq	Paula Rothämel
166	Proteomic Profiling of Immune Cell Development in Human Neonates	Alessandro Mattia
167	Tissue-specific macrophage programs in mycobacterial infection	Merve Göcer
168	The impact of CGRP on macrophage development in the skin	Samah Sarout
169	Age-dependent susceptibility to respiratory viral infection: a potential role of alveolar epithelial cells?	Pia Grimpe
171	Cytomegalovirus alters myeloid compartments of the central nervous system	Agnibesh Dey
172	The phosphoinositide 3-kinase delta-isoform instructs differentiation of regulatory T-lymphocytes in the thymus	Sylvia Vuillier
173	House Dust Mite Allergy in Early Childhood: Associations with Respiratory Infections and Sex-Specific Differences	Dimitra Zazara
175	Skin temperature response to a cold challenge in supraclavicular brown adipose tissue regions in 5-year-old children	Marie Albrecht
176	The Impact of a Neonatal CMV Infection on the Development of Lung Macrophages	Alina Semenjakin
177	Postnatal Stress Response Drives Long-Term Maladaptation of the Intestinal Epithelium	Fabian Guendel
179	Development and functional implications of circadian leukocyte dynamics in early life	Xia Li
180	RORγt-expressing dendritic cells are functionally versatile and evolutionarily conserved antigen presenting cells	Hamsa Narasimhan
181	Streptococcal meningoencephalitis dynamically shapes developmental monocyte and macrophage trajectories in the CNS	Vitka Gres
183	Unraveling Maternal-Fetal Immune Interplay: Microchimerism and Cytokine Profiles in Influenza-Induced maternal immune activation	Noa Breitenbach

## Posters

184	Multimodal characterization reveals transcriptional regulators of dermal macrophage subtypes	Samuel Wald
185	Neonatal neutrophilic cells play a role for microbiome-mediated immunologic maturation of the neonatal liver	Gabriele Kaiser
187	Lipid metabolism regulates macrophage differentiation in mycobacterial infection	Anne Lösslein
188	4-Hydroxybenzoic Acid: A Microbial Metabolite Crossing Barriers to Shape Early-Life Intestinal Immunity	Sandro Christensen
189	STAT1-signaling in cDC1 supports the homeostasis of cytotoxic CD8+ T cells in early life spleen	Dogus Altunöz
192	Fibro-immune interactions choreograph wound repair	Bikram Dasgupta
193	Placental extracellular vesicles as mediators in the recruitment of maternal microchimeric cells	Isabel Graf
197	Father's and mother's smoking during puberty alters embryonic gene expression lung function in adult offspring	Barbara Hammer
199	Microbiota-independent regulation of type 2 conventional dendritic cell function in early life spleen	Ramin Shakiba
200	The role of neonatal neutrophils in the development of airway immunity in newborns	Jessica Rühle
201	Mapping intestinal development and function with spatiotemporal analysis and organ-on-a-chip models	Verena Lentsch
203	The benefit of maternal vaccination and immunity transfer in a neonatal macaque model of SARS-CoV-2 infection	Claire-Maëlle Fovet
205	Investigating the role of microbiota in the germinal center reaction of wildling mice	Andreas Goschin
206	AI-supported metadata annotation of PILOT data sets	Felix Engel
207	Langerhans cells shape postnatal oral homeostasis in a mechanical-force dependent but microbiota and IL17- independent manner	Yasmin Jaber
208	Immune trajectories defining early lung development in newborn infant	Safouane Kadri
209	Environmental and transcriptional programs shaping lung dendritic cells across age	Kaushikk Ravi Renegarajan
210	Myeloid development and lipid metabolism in mycobacterial infections	Tiago Martins
212	Development of epidermal $\gamma\delta$ -T-cells and Langerhans cells	David Obwegs
217	Nutritional status and food consumption maternals interfere with US bioactive compounds from human colostrum	Licia Torres
219	Fates emanating from Flt3+ hematopoietic progenitor cells in situ	Branko Cirovic
220	Microbiota engage a HDAC3 rheostat to shape ILC3 homeostasis and function in the gut	Samantha Jensen

## Posters

222	Immune profiling of extracellular microvesicles' output after endocrine differentiation of decidual stromal cells	Tsvetelina Oreshkova
223	Identification of monocyte trajectories and their clinical determinants in a German preterm birth cohort promotes precision medicine	Maike Willers
225	Human breast milk $\gamma\delta$ T cells exhibit unique characteristics compared to blood circulating counterparts	Moosa Rezwani
226	Tissue imprinting defines functional mosaic of dermal macrophages	Florens Lohrmann
227	Human cytomegalovirus exploits IgG antibodies to achieve diaplacental transmission	Philipp Kolb
228	Maternal microbiota-derived metabolites drive embryonic epidermal formation and set neonatal skin barrier	Mariachiara Aloisi
229	Systemic and local distribution of CD83 molecule in human gestation	Kameliya Vinketova
230	Establishing an in vitro culture system to grow ROR $\gamma$ t <sup>+</sup> dendritic cells	Pin-Yu Kuo
231	Human invariant $\gamma\delta$ T cells populate fetal peripheral organs to provide developmentally restricted and site-specific immunity	Guillem Sanchez Sanchez
234	Effect of maternal and early-life diet on gut microbiota composition and the development of the offspring's rat immune system	Karla Rio-Aige
235	Investigating sex differences in the T cell responses to measles vaccination in sex discordant twins	Mzabalazo Nsimbi
236	Impact of intrauterine inflammation on neonatal dendritic cell development and function	Sadiq Nasra
238	Developmental programming of offspring immune development: role of corticosteroids	Shruta Pai
239	Commensal skin Staphylococci reshape systemic innate-like T cell composition	Indira Rao
242	Human milk immunoglobulin A binding of early life microbiota: identifying commensals highly targeted by IgA	Christine Bäuerl
243	Neonatal hypoxic-ischemic brain injury sequentially recruits neutrophils with dichotomous phenotype and function	Josephine Herz
244	KIR reporter cell lines indicate HLA-C modification in human cytomegalovirus infected fibroblasts	Anne Halenius
245	Diverse sources of IL-7 and their potential roles in shaping the intestinal innate lymphoid cell niche	Maximilian Riedel
246	The immune composition of human milk is different in first-time mothers	Karla Rio-Aige
247	Neonatal organoids to study the intestinal barrier during gut maturation	Inga Viktoria Hensel

## Posters

249	Interleukin-6 mediates susceptibility of neonatal hosts to Group B Streptococcus via inhibition of antibacterial autophagy	Eleni Vergadi
250	Loss of mucus barrier integrity is part the normal colonic development	Jenny Gustafsson
251	Non-redundant functions of $\alpha\beta$ and $\gamma\delta$ T cells at single-cell resolution	Zhibek Zhumadilova
253	A multi-metric assessment of microglia reveals dynamic morphological development trajectories and the continuous spatial coordination of their network	Lance Fredrick Pahun Bosch
256	Maternal antibodies regulate the establishment of oral and salivary mucosal immunity	Reem Naamneh
258	Dietary osteopontin promotes production of phenyl-lactic acid by lactic acid bacteria to confer protection from respiratory infections in early life	William Kwong Chung
259	Developmental roles for fetal mast cells	Clara Marie Munz
263	Unique infant immune signatures identify subgroups of children with increased risk of atopic dermatitis	Anna Hammerich Thyssen
264	Maternal immunity protects offspring from enteric viral infection without negatively affecting humoral immune memory	Konjit Getachew Muleta
265	Gut microbiota compounds in milk and maternal plasma is linked to bioactive metabolites in neonates of mothers supplemented with Bifidobacterium animalis	Patricia Bito Rodrigues
266	Maternal probiotic exposure enhances CD8 T cell protective neonatal immunity and modulates offspring metabolome to control influenza virus infection	Clara Valentin
267	NLRP3 inflammasome activation and Gasdermin D-dependent pore formation in neonatal neutrophils	Markus Sperandio Roland Immler
268	Neutrophils contribute to placental and fetal infection with the human pathogen Listeria monocytogenes	Nikita Raj
269	Visualizing metabolic differences in neonatal B cells and Bregs using the SCENITH method	Julia Renneberg
270	Antibiotics in pregnancy: effects of sow antimicrobials on piglet gut microbiota, immune system and growth	Mikael Niku
271	Influence of micro- and nanoplastics on embryonic development	Marina Luisa Mayer
272	Adoptive T cell Therapy as a possible therapeutic option for pediatric neuroblastoma	Leyma Wardak
272	Adoptive T cell Therapy as a possible therapeutic option for pediatric neuroblastoma	Leyma Wardak
270	Antibiotics in pregnancy: effects of sow antimicrobials on piglet gut microbiota, immune system and growth	Mikael Niku
271	Influence of micro- and nanoplastics on embryonic development	Marina Luisa Mayer
272	Adoptive T cell Therapy as a possible therapeutic option for pediatric neuroblastoma	Leyma Wardak



## Posters from short talk authors

104	Early life RSV infection as a preventable risk factor for asthma	Elisabeth de Leeuw
124	Neonatal monocytes and macrophages display a diverse metabolic phenotype	Renske de Jong
149	Long-term induction of hepatic T cell homeostasis during an early neonatal time window	Natalia Torow
150	Naive T cell development in the gut	Elise Saager
153	Early microglia progenitors colonize the embryonic CNS via integrin-mediated migration from the pial surface	Katrin Kierdorf
154	Antibiotic use during pregnancy influences placental morphogenesis and offspring immune system development	Melanie Conrad
162	Maternal gut microbiota induces $\gamma\delta$ T cells at the maternal-fetal interface to prevent pathogen-associated intrapartum complications	Koichiro Suzuki
174	Inhibition of TNFR2 signaling improves neonatal immune responses to vaccination and infection by limiting regulatory maturation of lung XCR1+ dendritic cells	Aaron Silva Sanchez
178	LIN28B constrains IgL receptor editing to accelerate B cell maturation in early life	Elena Boldrin
182	The influence of T cell-microbial interactions during weaning on long-term diseases development	Ziad Al Nabhani
198	Contribution of pancreatic macrophages to neonatal islet maturation and long-term glucose homeostasis.	Maria Ovezik
213	Spatio-temporal regulation of intestinal development	Chloe H. Lee
215	In utero infection modulates neonatal tissue-resident acetyl choline-producing B cells critical for regulating macrophage responses to influenza infection	Nicole Baumgarth
216	Holistic genetic barcoding reveals a lineage tree of tissue macrophage development	Larissa Frank
218	A systemic wave of neonatal eosinophils promotes tissue homeostasis and commensalism.	Igancio Gonzalez Perez
237	Maternal microbial metabolites and extracellular vesicles in the fetal development of the intestinal immune system	Mikael Niku
240	Regulation of ILC differentiation and maintenance by the intestinal epithelium	Christina Stehle
248	A single-cell multiomics map of prenatal and adult human B-lymphopoiesis	Marta Rizzi
254	Early-life bifidobacterial metabolite reduces IgE production and allergic sensitization	Rasmus Kaae Dehli

The **European Federation of Immunological Societies (EFIS)** has generously provided funds for Early Career Researcher Grants to support junior researchers to attend the Symposium. We congratulate the following participants who have been awarded an EFIS Grant.

**Elena Boldrin, PhD**

Lund University,  
Sweden

**Mzabalazo Nsimbi, PhD student**

Africa Health Research Institute,  
South Africa

**Ignacio Gonzalez Perez, PhD**

University of Zurich,  
Switzerland

**Karla Rio Aige, PhD**

University of Barcelona,  
Spain

**Yasmin Jaber, DMD/PhD student**

Hebrew University of Jerusalem,  
Israel

**Guillem Sanchez Sanchez, PhD**

Université Libre de Bruxelles,  
Belgium

**Chloe H-J Lee, PhD**

University of Oxford,  
United Kingdom

**Licia Torres, PhD**

Universidade Federal de  
Minas Gerais,  
Belo Horizonte, Brazil

**Clara Marie Munz, PhD**

University of Edinburgh,  
United Kingdom

**Sylvia Vuillier, PhD**

Toulouse Institute for Infectious  
and Inflammatory Diseases,  
France



We gratefully acknowledge the support of the **Centre for Integrative Biological Signalling Studies (CIBSS)** for sponsoring David Hackam's attendance.



## Directions to the Social Event

The Social Event on Friday 11th April will take place in the Wodan Halle, Leo-Wohleb-Str. 4, 79098 Freiburg, which is less than 1km away from the Historisches Kaufhaus and easily reachable on foot.

Directions are available here:

<https://maps.app.goo.gl/EbmTKdz2Zr3DXe5Ng>

...or you can use the QR code on the right.



## Poster abstracts and author lists

All **poster abstracts and author lists** can be viewed in ConfTool. Therefore, you will need to log in first in ConfTool using your user name and password. Afterwards you can use the link:

[https://www.conftool.net/perinatal-immunity-2025/index.php?page=browse-Sessions&form\\_session=2&presentations=show](https://www.conftool.net/perinatal-immunity-2025/index.php?page=browse-Sessions&form_session=2&presentations=show)

...or the QR code on the right.



## Audience Poster Prize

All participants are encouraged to vote for the **Audience Poster Prize** using the following link:

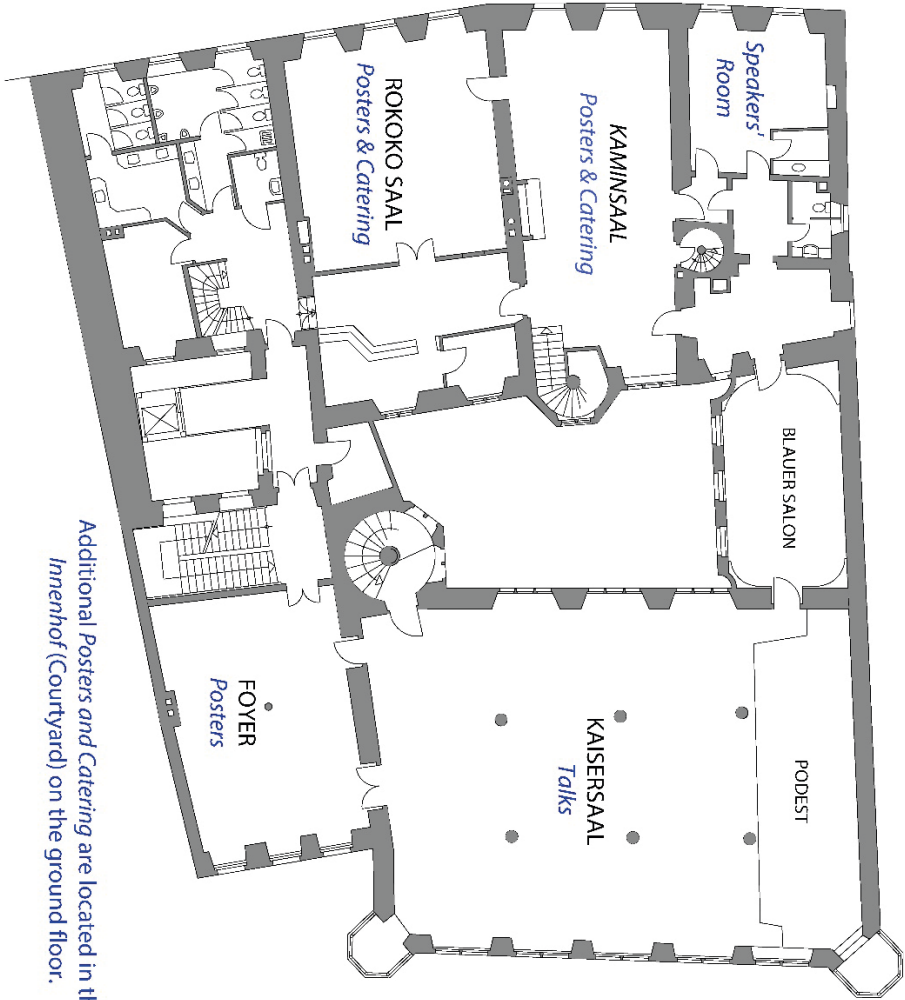
<https://app.sli.do/event/tiygh8wgJQyTNJEbQ9Pm3T>

...or the QR code on the right.



Plan of the venue

SCHUSTERSTRASSE



MÜNSTERPLATZ

Additional Posters and Catering are located in the Innenhof (Courtyard) on the ground floor.

universität freiburg

UNIVERSITÄTS  
KLINIKUM FREIBURG



HZI HELMHOLTZ  
Centre for Infection Research

FAU  
Friedrich-Alexander-Universität

HELMHOLTZ  
MUNICH

UNIVERSITÄT  
WÜRZBURG

UNIKLINIK  
RWTHAACHEN



OTTO VON GUERICKE  
UNIVERSITÄT  
MAGDEBURG



FACULTY OF  
MEDICINE